

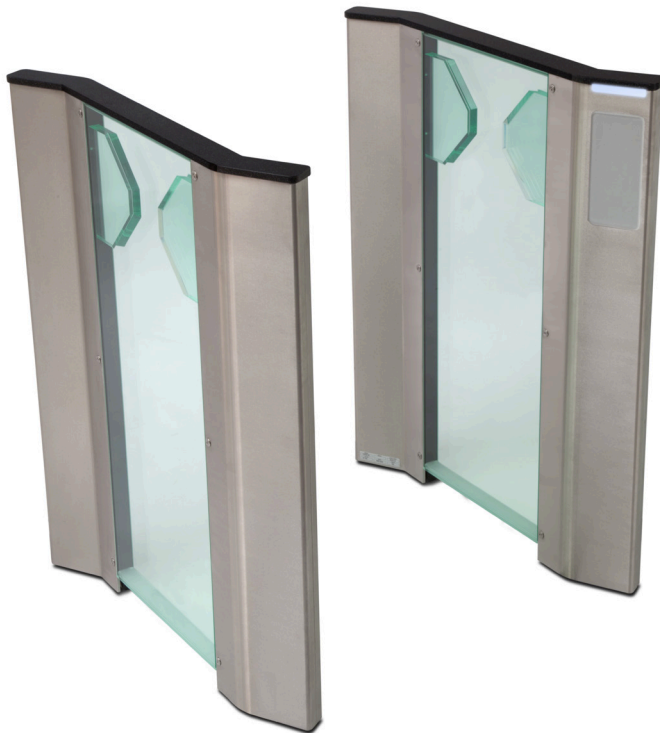
Fastlane[®] Clearstyle 400

F

fastlane
turnstiles by IDL

Setting the Standard

The second generation Clearstyle with IDL's patented optical system, CS400 offers the best detection in one of the slimmest footprints available. Although barrier-less it will assist your building access control system by generating an alarm in the absence of an acceptable access control card or associated token.



Utilising an infrared beam matrix to monitor the gap between the lanes the high speed processors that control the lane can make an accurate assessment and react accordingly. This model features a proximity reader window and in-built alarm sounders. Alarms are reported to your access control and CCTV systems to ensure that whilst unauthorised entrants may not be stopped, they will most certainly be noticed.

Barrier type

GLASS

ARM

OPTICAL

Secure

- 150 mm Tailgate Detection
- Class leading infrared detection systems
- Detects and deters tailgaters in very close proximity
- Limited Beams to discriminate objects

Accurate

- Accurately assesses traffic through the lane
- Differentiates body mass from smaller objects
- Provides instant feedback of traffic flow and incidents

Features

- Quick and safe
- High processing speed reduces traffic build-up
- No barrier to impede movement
- Clear Sides

Aesthetics

- Inspired, elegant design
- Barrier free for a clean un-obstructed look
- Slim pedestal design minimising footprint

Reliability

- Quality build lowers whole life costs
- Fewer failures mean lower repair costs



Fastlane® Clearstyle 400

F

fastlane
turnstiles by IDL

Physical

Enclosure material	Stainless steel 304, 240 grit (satin no. 4), horizontal grain
Dimensions L x W x H	780 x 168 x 970mm / 30.7 x 6.6 x 38.2 Inches
Pedestal weight	40kg / 88.1lbs
Lane width	550mm / 21.7" to 914mm / 36"
DDA/ADA lane width	914mm / 36"
Infrared optical matrix – pulsed beam paths	6
Infrared wavelength nm	940
Tailgate detection distance	150mm / 6"

Pedestrian Access Throughput

Optical system performance	1 person per second
Card buffering capacity	10 cards max

Turnstile Power Specifications

Per lane	24Vdc 0.6A (max)
----------	------------------

Environmental

Temperature	5 to 50 degrees centigrade
Relative humidity	5 to 95% non-condensing
Energy consumption per lane	126kW hours per annum
Ingress protection	IP40 (Internal building applications only)

Power Supply (Included)

Enclosure	Black mild steel, wall mounted, 330mm (13") x 200mm (8") x 136mm (5.5")
Modules	Single, Dual or quad 24Vdc 2.5A overcurrent fold back
Input voltage	100-240Vac, 60/50Hz, 5A fused spur connection
Approvals	UL 60950-1 CSA C22.2 No. 60950-1-07 second edition

Access Control Inputs

Voltage-free contact;	Entry request (NORMALLY OPEN closing for 1 second)
1mA current sense	Exit request (NORMALLY OPEN closing for 1 second)
Screw terminal connector	Visitor entry (NORMALLY OPEN momentary closing contact)
Max conductor CSA 16AWG/ 1.5mm ²	Visitor exit (NORMALLY OPEN momentary closing contact)
Fire panel integration input	Opto-coupled Input 12-24Vdc @ 25mA nominal
Ethernet connection	RJ45 TCP/IP Port

Access Control Outputs

Voltage-free contact;	Entry monitor (NORMALLY CLOSED opening for 1 second)
Contact Rating 28Vdc 0.5A	Exit monitor (NORMALLY CLOSED opening for 1 second)
Screw terminal connector	Alarm 1 (NORMALLY CLOSED opening for 1 second)
Max conductor CSA 16AWG/ 1.5mm ²	Alarm 2 (NORMALLY CLOSED opening for 1 second)

System Output

Turnstile status display	RGB LED diffused through 10mm high clear frosted acrylic
Alarm sounder output	60 dB approx.

Technical Specification Version A2

Manufactured by Integrated Design Limited.



Feltham Point, Air Park Way, Feltham,
Middlesex, TW13 7EQ, United Kingdom

T: +44 (0)208 890 5550
E: info@fastlane-turnstiles.com
W: www.fastlane-turnstiles.com

Installation photos may not represent current production models.
Please note specifications are subject to change without prior notice and performance features vary from model to model.

Issue B2

Local Reseller

