

Fastlane® Glassgate 155

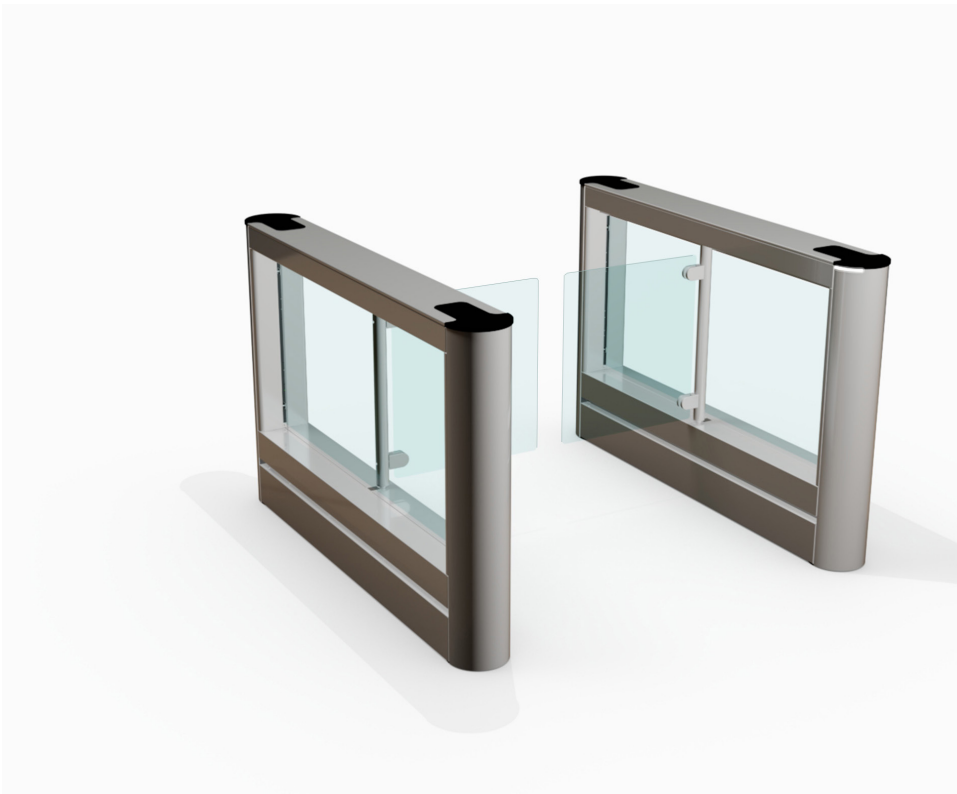
with Ethernet Connectivity

F

fastlane
turnstiles by IDL

Setting the Standard

The Glassgate 155, based upon the aesthetics of the popular Glassgate 150 model, offers additional security and lane width options whilst maintaining the renowned good looks of the Fastlane range and offering new opportunities for security control. Glassgate 155 features concealed optical systems for a sleeker look with waist height glass barriers and optional locking brakes. The longer pedestal now uses a 56 beam high resolution infrared matrix to ensure best in class detection of people and objects to ensure safe and secure operation. Lane widths up to 1200mm are achievable, especially suited to sports facilities where wider wheelchairs are the norm.



The Glassgate 155 is designed to integrate seamlessly with Access Control, CCTV and whole building management systems. By receiving information from your Access Control system, Glassgate 155 knows how many people to admit and in which direction of travel. Any unexpected movements are instantly met with an audible and visual alarm and signals can be passed to your Access Control or CCTV system to acknowledge an alarm condition has occurred. Glassgate 155 now features Fastlane *Connect* Ethernet communications for control, configuration and diagnostics.

Barrier type

GLASS

ARM

OPTICAL

Secure

- Class leading infrared detection systems
- Detects and deters tailgaters in very close proximity
- Barriers are a visual and physical deterrent

Accurate

- Accurately assesses traffic through the barrier
- Differentiates body mass from smaller objects
- Provides instant feedback of traffic flow and incidents

Features

- Quick and safe action
- High processing speed reduces traffic build-up
- Door-like motion ensures quick user acceptance

Aesthetics

- Inspired, elegant design
- Glass barriers provide secure and welcome entry
- Barriers open flush with the pedestal, minimising footprint

Reliability

- Quality build lowers whole life costs
- Fewer failures mean lower repair costs
- Online diagnostics and support packages



Fastlane[®] Glassgate 155

with Ethernet Connectivity



Physical

Enclosure material	Stainless steel 304, 240 grit (satin no.4), horizontal grain
Dimensions L x W x H	1510 x 188 x 965mm / 59.5 x 7.4 x 38.0 Inches
Weight (Interlane Pedestal)	77kg / 169.8lbs
Weight (RX/TX Pedestal)	69kg / 152.2lbs
Glass Barrier (STD, DDA, 1100, 1200)	4kg/8.8lbs 6kg/13.2lbs 7kg/15.4lbs 8kg/17.6lbs
Lane widths	660mm/26" 914mm/36" 1100mm/43.3" 1200mm/47.2"
Barrier height	845mm / 33.2"
Barrier material	10mm Toughened Safety Glass EN14179 / ANSI 97.1
Barrier Breakaway Force - Friction Brakes	≥ 60N (measured at 285mm from the shaft axis)
Maximum Rated Force - Locking Brakes	≥ 300N* (the brake may slip above rated force, damage to the glass clamps and panel may also occur)
Barrier speed of operation	< 1 second (for lane widths greater than 1100mm, it is recommended that the barriers are run at a lower speed)
Infrared optical matrix – pulsed beam paths	56
Infrared wavelength nm	940
Tailgate detection distance	5mm / 1/4"

Pedestrian Access Throughput

Optical system performance	1 person per second
Typical application	40 persons per minute
Card buffering capacity	10 cards max
Turnstile functions	As detailed in the configuration manual

Turnstile Power Specifications

Receive Gate / Transmit Gate	24Vdc 1.25A (max)
Dual Gate Interlane	2x 24Vdc 1.25A (max)

Environmental

Temperature	5 to 50 degrees centigrade
Relative humidity	5 to 95% non-condensing
Energy consumption per lane	421kW hours per annum
Ingress protection	IP20 (Internal building applications only)

Power Supply (Included)

Enclosure	Black mild steel, wall mounted, 330mm (13") x 200mm (8") x 136mm (5.5")
Modules	Dual or quad 24Vdc 2.5A overcurrent fold back
Input voltage	100-240Vac, 60/50Hz, 5A fused spur connection

Access Control Inputs

Voltage-free contact;	Entry request (NORMALLY OPEN closing for 1 second)
1mA current sense	Exit request (NORMALLY OPEN closing for 1 second)
Screw terminal connector	Visitor entry (NORMALLY OPEN momentary closing contact)
Max conductor CSA 16AWG/ 1.5mm ²	Visitor exit (NORMALLY OPEN momentary closing contact)
Fire panel integration input	Opto-coupled Input 12-24Vdc @ 25mA nominal
Ethernet connection	RJ45 TCP/IP Port

Access Control Outputs

Voltage-free contact;	Entry monitor (NORMALLY CLOSED opening for 1 second)
Contact Rating 28Vdc 0.5A	Exit monitor (NORMALLY CLOSED opening for 1 second)
Screw terminal connector	Alarm 1 (NORMALLY CLOSED opening for 1 second)
Max conductor CSA 16AWG/ 1.5mm ²	Alarm 2 (NORMALLY CLOSED opening for 1 second)

System Output

Turnstile status display	RGB LED diffused through 10mm high clear frosted acrylic
Alarm sounder output	75 – 100 dB (93dB at 1 metre)

Reliability

In Normal use, 5,000,000 cycles of operation is expected before electro mechanical parts require replacement as part of an approved preventative maintenance programme.

Technical Specification Version A2

Manufactured by Integrated Design Limited.



Feltham Point, Air Park Way, Feltham, Middlesex, TW13 7EQ, United Kingdom

T: +44 (0)208 890 5550
E: info@fastlane-turnstiles.com
W: www.fastlane-turnstiles.com

Issue A1

Installation photos may not represent current production models. Please note specifications are subject to change without prior notice and performance features vary from model to model.

Local Reseller