

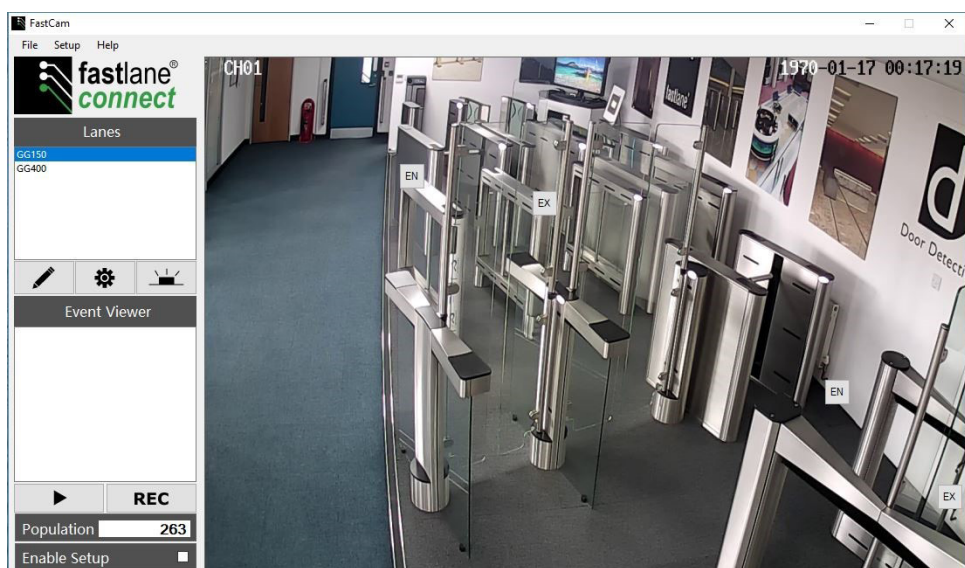
Fastlane® FastCam

with Ethernet Connectivity



Setting the Standard

Fastcam with Fastlane *Connect* provides a live video stream from a recommended IP connected camera to enable monitoring of your Fastlane installation. Running on a locally connected windows PC, the system will monitor your Fastlane Turnstiles and automatically record any alarm events with before and after footage, along with a time and date stamp. This recording will then be easy to review to ensure any violations are dealt with promptly.



Unique to Fastcam is the ability to add command buttons to the live image stream to enable authorised users to operate the Fastlane turnstiles from their display and keyboard. Options allow the operator to open the lanes in the egress or ingress directions to let a single person enter or exit. Fastcam uses Fastlane *Connect*, the TCP/IP communications interface embedded within most Fastlane and Door Detective products.

- Barrier type**
 - N/A
 - ARM
 - OPTICAL
- Secure**
 - Locally authorised user control over LAN communication interface
- Accurate**
 - Uses the acclaimed Fastlane multi beam infrared matrix for accurate passage and alarm information
- Features**
 - Easy set up and intuitive use
- Aesthetics**
 - IDL designed GUI for easy access
- Reliability**
 - Fastlane built reliability and low total cost of ownership

Fastlane[®] FastCam

with Ethernet Connectivity



Camera

- Connected to your local network
- Statically addressed
- Supporting h264 and RTSP video streaming

Windows Machine

- Connected to your local network
- Running Windows 7, 8 or 10
- 4GB of RAM minimum required
- System administrator rights may be required

Technical Specification Version A0
Manufactured by Integrated Design Limited.



Feltham Point, Air Park Way, Feltham,
Middlesex, TW13 7EQ, United Kingdom

T: +44 (0)208 890 5550
E: info@fastlane-turnstiles.com
W: www.fastlane-turnstiles.com

Issue A0

Installation photos may not represent current production models.
Please note specifications are subject to change without prior notice and performance features vary from model to model.

Local Reseller

